

Cambridge *innovation* in numbers

The Cambridge Cluster

There are currently...

5,100+

knowledge intensive firms



69,100+

people employed by knowledge intensive firms



£18bn

in total turnover of knowledge intensive firms



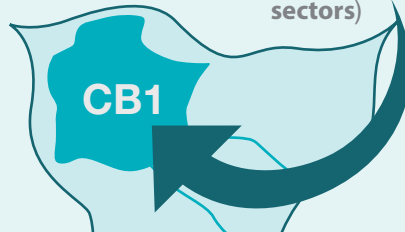
3rd most successful

University innovation ecosystem in the world

(MIT Skoltech Initiative Report, 2014)



29% of people work in the knowledge intensive sectors)



316



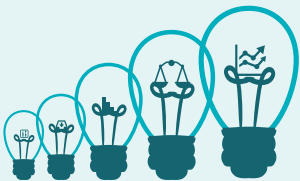
patent applications published per

100,000 residents

Highest in the UK and more than the next two cities combined

770+

knowledge intensive services companies



810+

high-tech manufacturing companies



450+

life science services and healthcare companies



3,080+

information technology and communication companies



The University

11,900+

people employed directly by the University



University expenditure of **£2,308m**



University income of **£2,192m**

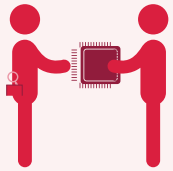
110

Cambridge affiliates have been awarded the Nobel Prize since 1904



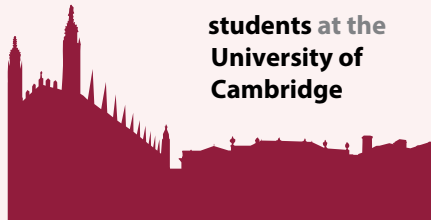
2,320+

researchers supported by Cambridge Enterprise (the University's knowledge and technology transfer office) in academic year 2019



19,100+

students at the University of Cambridge



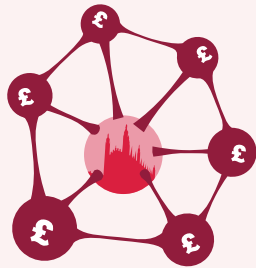
87%

of submissions deemed world leading or internationally excellent in research according to the 2014 Research Excellence Framework (REF)



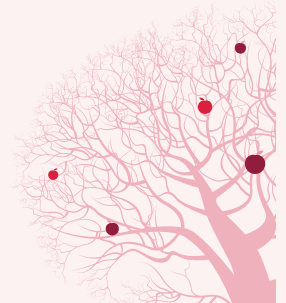
£1.8bn

in follow-on funding raised by University of Cambridge spin-outs in the Cambridge Enterprise portfolio since 1995



97.85%

...the 5-year survival rate of Cambridge Enterprise portfolio companies*



£101.3m

The total for translational research funding won with the support of Cambridge Enterprise, 2011-19



260+

firms founded by Cambridge University Computer Lab alumni



90%

Cambridge recent leavers are in employment or full-time study, no matter the degree. A further 6% are travelling or not looking for work



This information has been collated from the MIT Skoltech Initiative Report (June 2014, 180/11/14), University of Cambridge Annual Report 2019, Research Excellence Framework 2014 (Results and Submissions), University of Cambridge Faculty of Computer Science and Technology Annual Report 2017-18, University of Cambridge Careers Service (www.undergraduate.study.cam.ac.uk/why-cambridge/careers), * companies incorporated in the 10-year period from 01.01.2004 – 31.12.2013 Cambridge Enterprise 2018, Cambridge Ahead Cluster Map (October 2020), the Centre for Cities Outlook (2019), University of Cambridge Facts and Figures (Jan 2019), www.cam.ac.uk/research/research-at-cambridge/nobel-prize-winners.

Figures are based on information available at the time of printing – October 2020